



Synaptotagmin XIII Polyclonal Antibody

Catalog No	YP-Ab-00745
Isotype	IgG
Reactivity	Human;Mouse;Rat
Applications	WB;ELISA
Gene Name	SYT13
Protein Name	Synaptotagmin-13
Immunogen	The antiserum was produced against synthesized peptide derived from human SYT13. AA range:321-370
Specificity	Synaptotagmin XIII Polyclonal Antibody detects endogenous levels of Synaptotagmin XIII protein.
Formulation	Liquid in PBS containing 50% glycerol, 0.5% BSA and 0.02% sodium azide.
Source	Polyclonal, Rabbit,IgG
Purification	The antibody was affinity-purified from rabbit antiserum by affinity-chromatography using epitope-specific immunogen.
Dilution	Western Blot: 1/500 - 1/2000. ELISA: 1/10000. Not yet tested in other applications.
Concentration	1 mg/ml
Purity	≥90%
Storage Stability	-20°C/1 year
Synonyms	SYT13; KIAA1427; Synaptotagmin-13; Synaptotagmin XIII; SytXIII
Observed Band	48kD
Cell Pathway	Membrane ; Single-pass membrane protein .
Tissue Specificity	Expressed in brain, pancreas and kidney.
Function	domain:The first C2 domain/C2A does not mediate Ca(2+)-dependent phospholipid binding.,domain:The second C2 domain/C2B domain binds phospholipids regardless of whether calcium is present.,function:May be involved in transport vesicle docking to the plasma membrane.,similarity:Belongs to the synaptotagmin family.,similarity:Contains 2 C2 domains.,subunit:Interacts with NRXN1.,tissue specificity:Expressed in brain, pancreas and kidney.,
Background	synaptotagmin 13(SYT13) Homo sapiens This gene encodes a member of the large synaptotagmin protein family. Family members have an extracellular N-terminal transmembrane domain and a cytoplasmic C terminus with two tandem C2 domains (C2A and C2B). Synaptotogmin family members can form homo- and heteromeric complexes with each other. They also have different biochemical properties and developmental profiles, and patterns of tissue distribution. Synaptotagmins function as membrane traffickers in multicellular organisms. Two alternatively spliced transcript variants that encode different protein isoforms have



been described for this gene. [provided by RefSeq, Oct 2011],

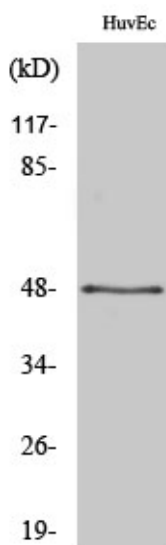
matters needing attention

Avoid repeated freezing and thawing!

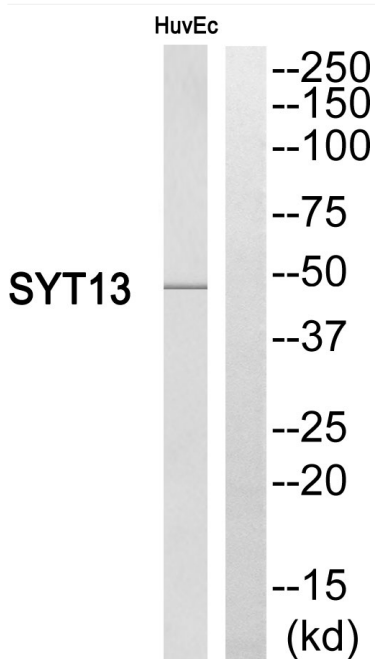
Usage suggestions

This product can be used in immunological reaction related experiments. For more information, please consult technical personnel.

Products Images



Western Blot analysis of various cells using Synaptotagmin XIII Polyclonal Antibody



Western blot analysis of SYT13 Antibody. The lane on the right is blocked with the SYT13 peptide.